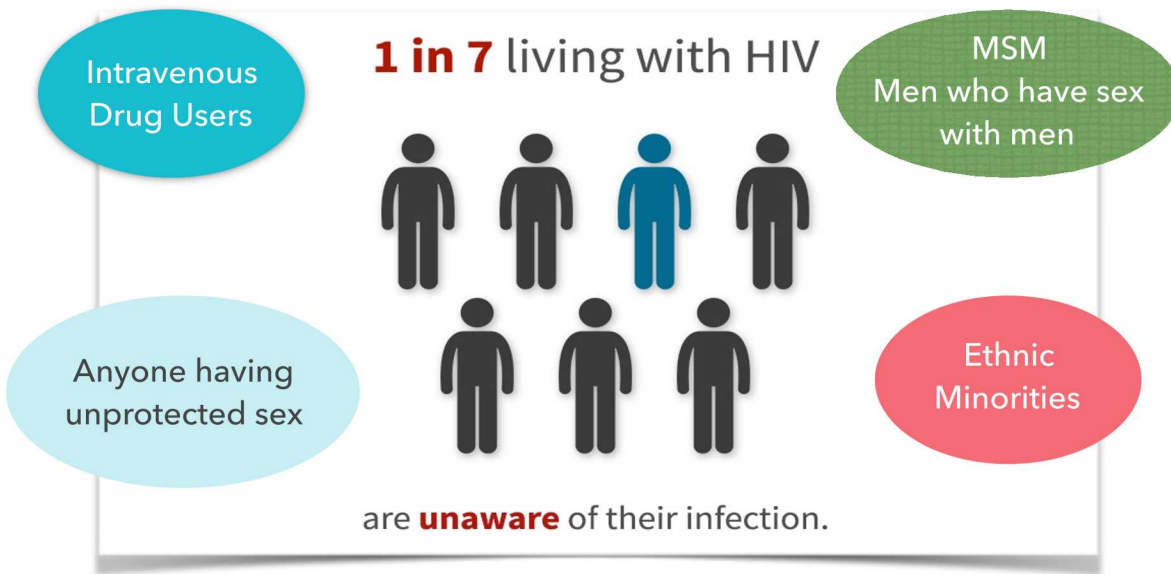


HIV...What you need to know



Who is at risk for HIV & which populations are most affected?

Anyone can contract HIV.

Human immunodeficiency virus (HIV) is the virus that causes acquired immune deficiency syndrome (AIDS) and is transmitted through contact with infected blood and bodily fluids. Such contact can occur through unprotected sex, through mother-to-child transmission during pregnancy or breast feeding, and through receipt of infected blood transfusions and plasma products during medical care in some parts of the world. There is currently no cure for HIV/AIDS. Once an individual contracts HIV, he or she has it for life. If you feel you are at risk, get tested at one of our local public health testing sites.

MYTH #1

HIV is a death sentence.

1

With proper treatment, people with HIV can live a normal life span.

MYTH #2

You can tell someone has HIV/AIDS just by looking at them.

2

With adequate treatment and medications symptoms will not be present.

MYTH #3

Straight people don't have to worry about HIV

3

Heterosexuals account for 25% of new HIV cases



Public Health
Prevent. Promote. Protect.
Butler County
General Health District

TESTING IN BUTLER COUNTY

Caracole

301 S. 3rd St. Hamilton
2nd & 4th
Thursday each month
(513)761-1480
11am-1pm



TESTING IN HAMILTON

Planned Parenthood

11 Ludlow St.
Hamilton
(513) 761-1480
1st Wednesday
each month
12pm-2pm



TESTING IN MIDDLETOWN

Syringe Exchange

400 Block Crawford St.
(513)761-1480
Tuesdays 10am-1pm



Public Health
Prevent. Promote. Protect.